

# Black Pine Oxide Gold Project Drill Results



**LBP906**  
 19.8 m @ 1.02 g/t Au  
 21.3 m @ 3.74 g/t Au  
 inc 3.0 m @ 15.85 g/t Au

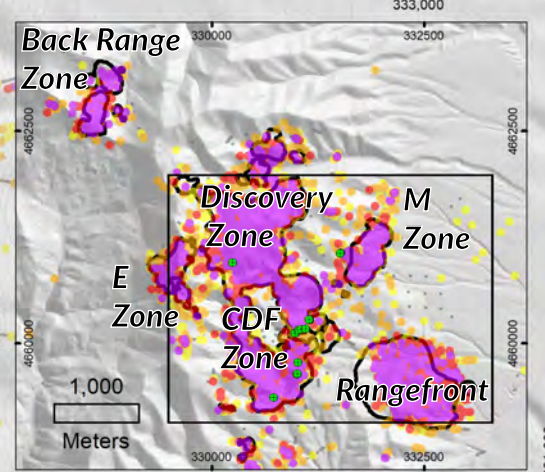
**Discovery Zone**

**LBP887**

**LBP885**  
**LBP886**  
**LBP889**  
**LBP894**  
**LBP897**

**LBP884**  
 6.1 m @ 1.10 g/t Au  
 29.0 m @ 0.80 g/t Au

**M Zone**



3D drill assays are display weighted to preferentially show higher grade assays above lower grade in order to highlight the distribution of high grade gold.

**A**

**A'**

**LBP875**  
**LBP876**  
**LBP877**

**Tallman Pit**

**LBP888**  
**LBP890**  
**LBP891**

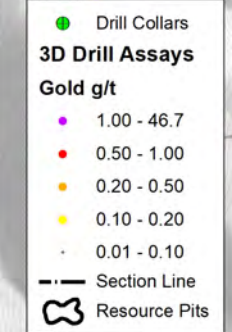
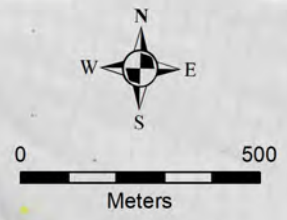
**LBP881**  
 30.5 m @ 0.67 g/t Au  
 inc 4.6 m @ 1.62 g/t Au

**LBP878**

**LBP892**  
 45.7 m @ 0.74 g/t Au  
 inc 9.1 m @ 2.17 g/t Au

**LBP882**  
**LBP883**

**LBP879**  
**LBP880**



**CDF Zone**

**LBP893**  
 10.7 m @ 3.28 g/t Au

**Rangefront Zone**

**LBP896**

**LBP898**

**LBP899**

**LBP900**

330,000 331,000 332,000 333,000 UTM Easting coordinates

4,660,000 4,661,000 UTM Northing coordinates



# Black Pine Oxide Gold Project

**Drill Trace Legend**  
 — Current Release  
 - - Previous Release & Historic Trace

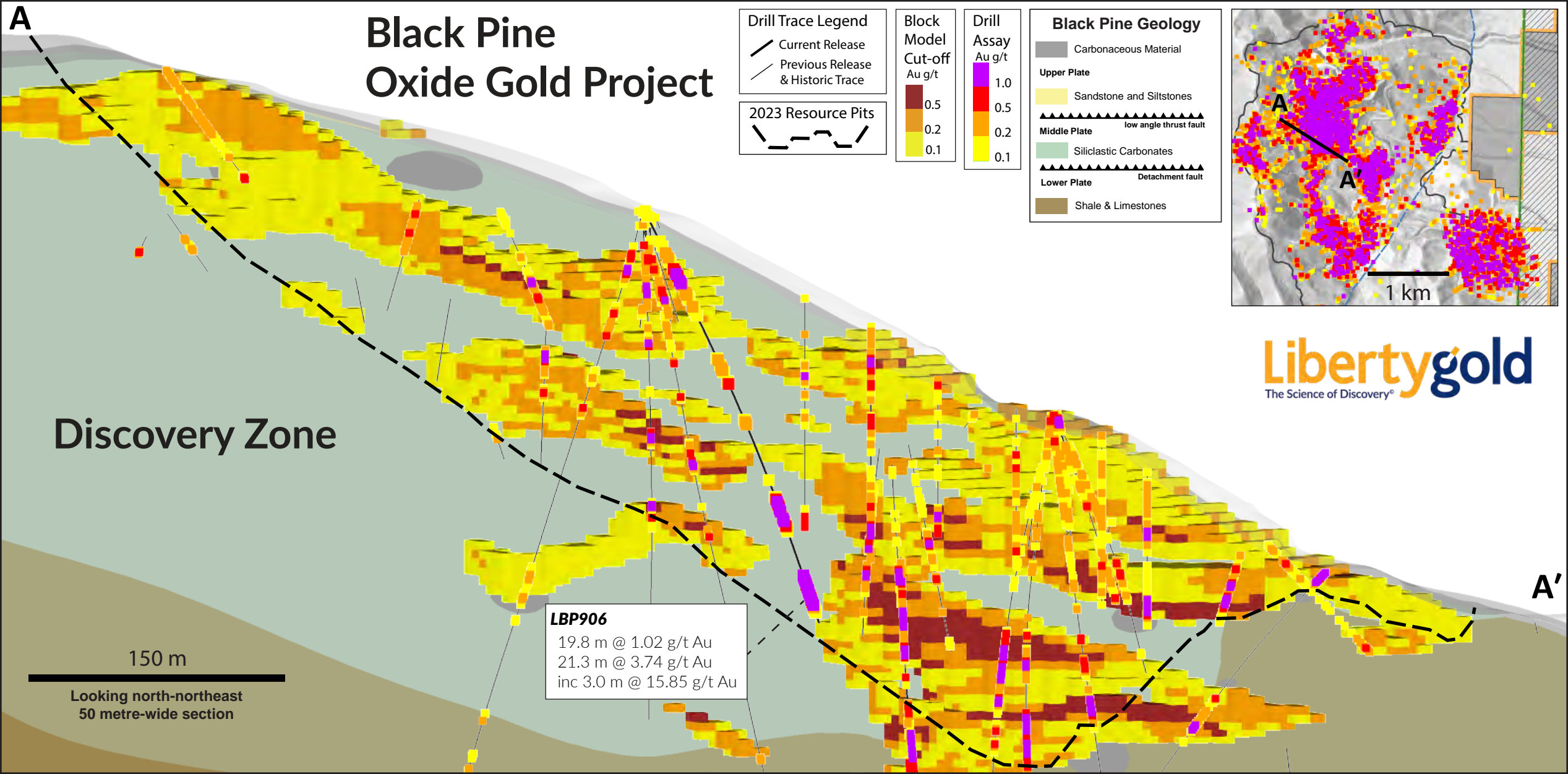
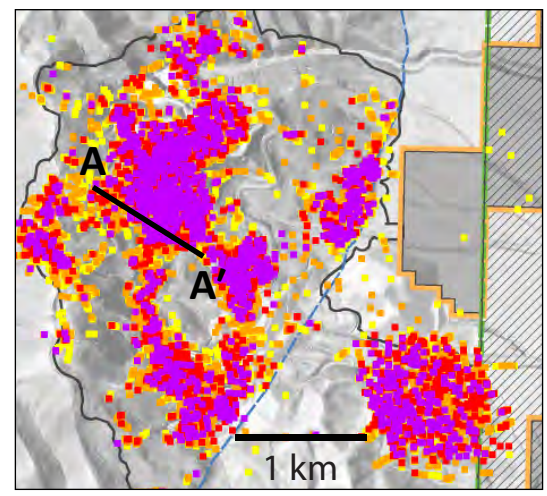
**2023 Resource Pits**

**Block Model Cut-off Au g/t**  
 0.5  
 0.2  
 0.1

**Drill Assay Au g/t**  
 1.0  
 0.5  
 0.2  
 0.1

**Black Pine Geology**

- Carbonaceous Material
- Upper Plate**
  - Sandstone and Siltstones
- Middle Plate**
  - low angle thrust fault
  - Siliclastic Carbonates
- Lower Plate**
  - Detachment fault
  - Shale & Limestones



Discovery Zone

**LBP906**  
 19.8 m @ 1.02 g/t Au  
 21.3 m @ 3.74 g/t Au  
 inc 3.0 m @ 15.85 g/t Au

150 m  
 Looking north-northeast  
 50 metre-wide section

**Libertygold**  
 The Science of Discovery®