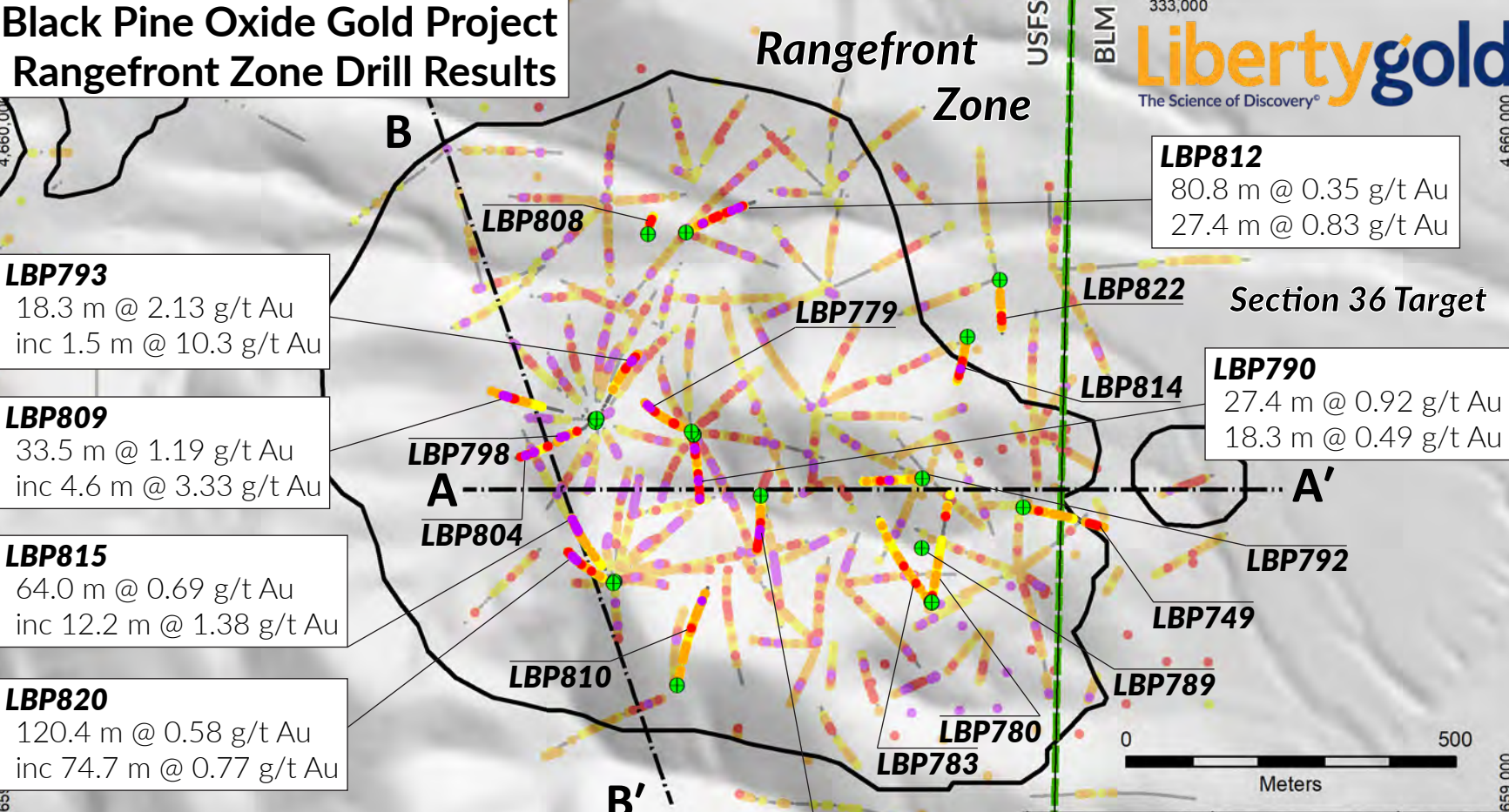


Black Pine Oxide Gold Project Rangefront Zone Drill Results



LBP793
 18.3 m @ 2.13 g/t Au
 inc 1.5 m @ 10.3 g/t Au

LBP809
 33.5 m @ 1.19 g/t Au
 inc 4.6 m @ 3.33 g/t Au

LBP815
 64.0 m @ 0.69 g/t Au
 inc 12.2 m @ 1.38 g/t Au

LBP820
 120.4 m @ 0.58 g/t Au
 inc 74.7 m @ 0.77 g/t Au

LBP812
 80.8 m @ 0.35 g/t Au
 27.4 m @ 0.83 g/t Au

LBP790
 27.4 m @ 0.92 g/t Au
 18.3 m @ 0.49 g/t Au

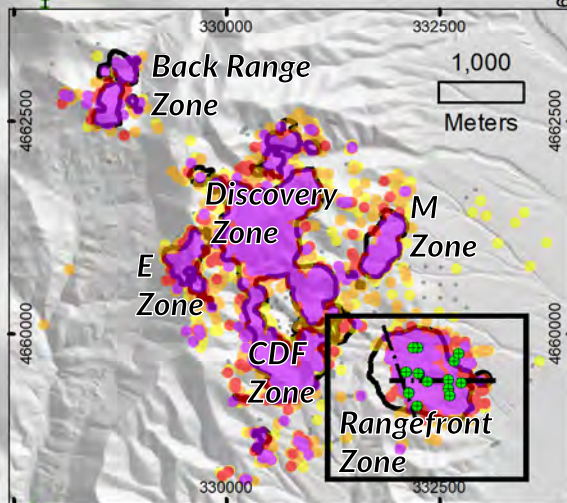
LBP795
 32.0 m @ 0.53 g/t Au
 inc 10.7 m @ 1.18 g/t Au
 24.4 m @ 0.69 g/t Au
 inc 7.6 m @ 1.80 g/t Au

- Drill Collars
- 3D Drill Assays**
- Gold g/t**
- 1.00 - 23.70
- 0.50 - 1.00
- 0.20 - 0.50
- 0.10 - 0.20
- 0.01 - 0.10
- Cross-Section
- USFS / BLM Boundary
- Resource Pits

previously released
LBP708

Rangefront South Target

3D drill assays are display weighted to preferentially show higher grade assays above lower grade in order to highlight the distribution of high grade gold.

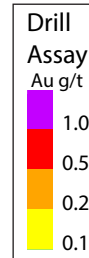
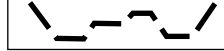


Black Pine Oxide Gold Project Rangefront Drill Results

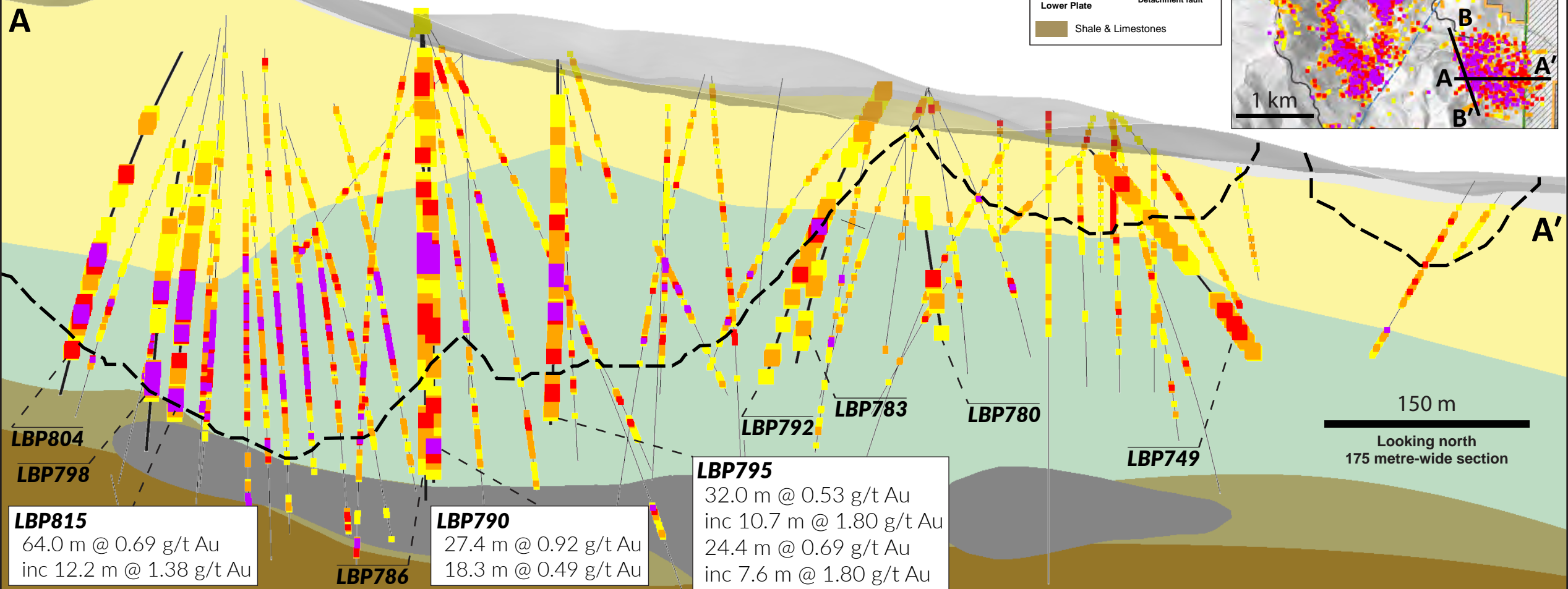
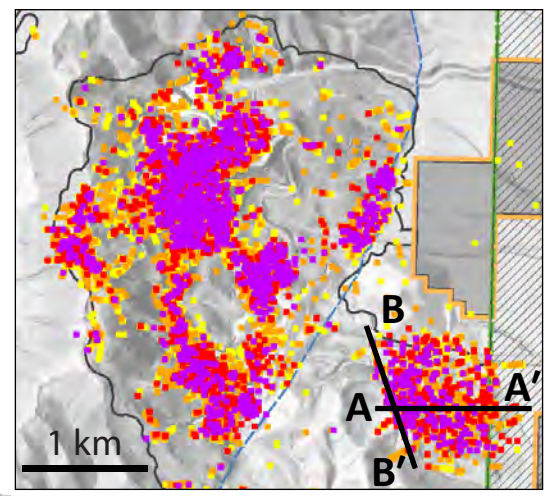
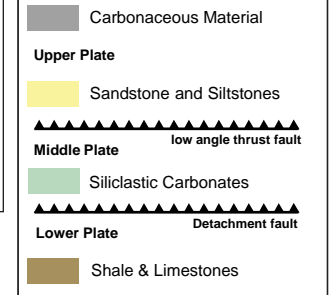
Drill Trace Legend

- Current Release
- - - Previous Release & Historic Trace

2023 Resource Pits



Black Pine Geology



LBP815
64.0 m @ 0.69 g/t Au
inc 12.2 m @ 1.38 g/t Au

LBP790
27.4 m @ 0.92 g/t Au
18.3 m @ 0.49 g/t Au

LBP795
32.0 m @ 0.53 g/t Au
inc 10.7 m @ 1.80 g/t Au
24.4 m @ 0.69 g/t Au
inc 7.6 m @ 1.80 g/t Au

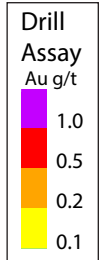
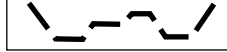
150 m
Looking north
175 metre-wide section

Black Pine Oxide Gold Project Rangefront Drill Results

Drill Trace Legend

- Current Release
- - - Previous Release & Historic Trace

2023 Resource Pits



Black Pine Geology

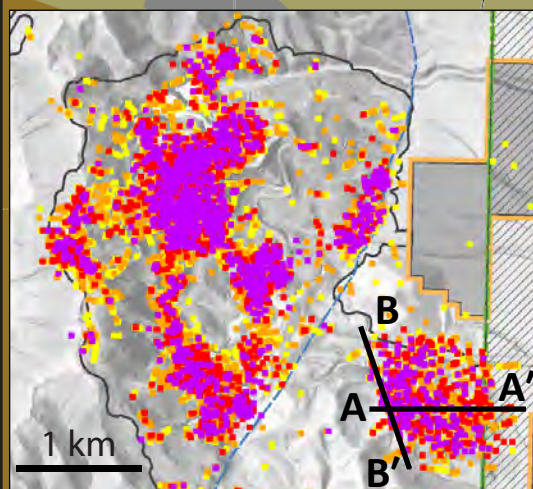
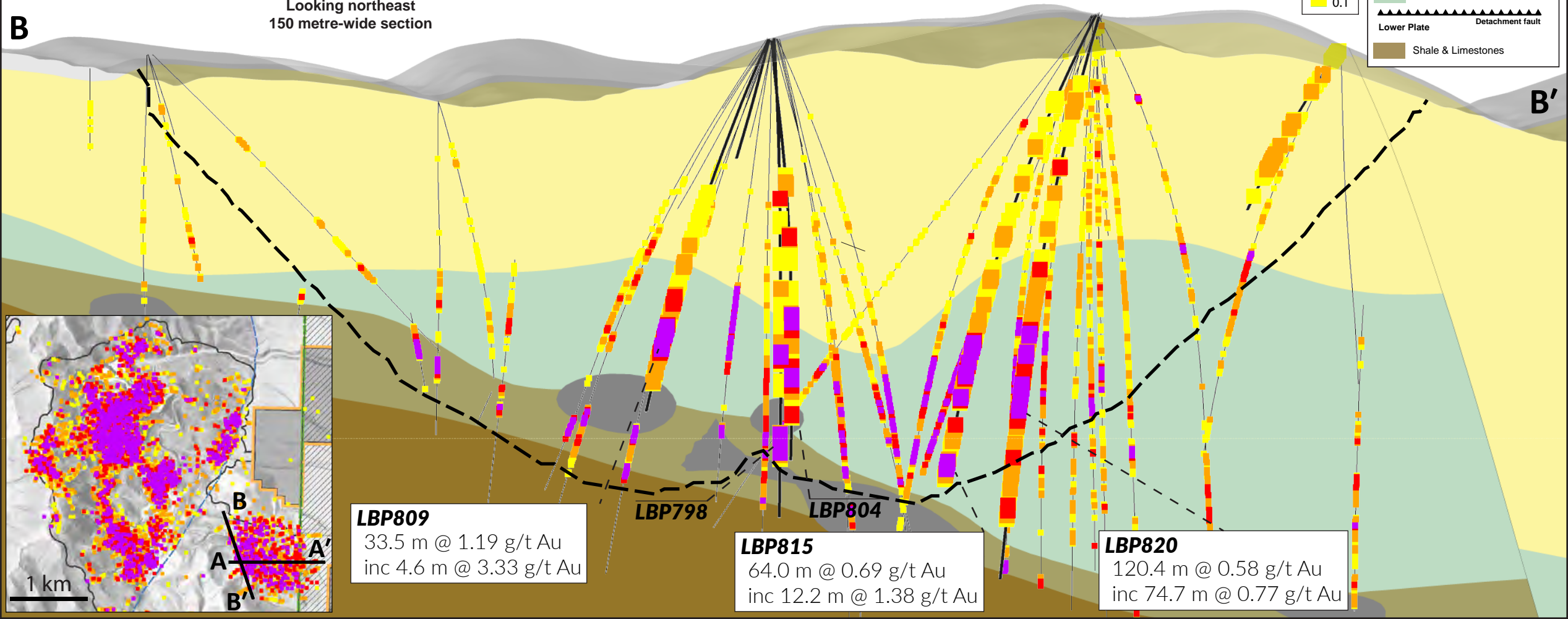
- Carbonaceous Material
 - Upper Plate**
 - Sandstone and Siltstones
 - Middle Plate**
 - Siliclastic Carbonates
 - Lower Plate**
 - Shale & Limestones
- low angle thrust fault
Detachment fault

150 m

Looking northeast
150 metre-wide section

B

B'



LBP809
33.5 m @ 1.19 g/t Au
inc 4.6 m @ 3.33 g/t Au

LBP815
64.0 m @ 0.69 g/t Au
inc 12.2 m @ 1.38 g/t Au

LBP820
120.4 m @ 0.58 g/t Au
inc 74.7 m @ 0.77 g/t Au

LBP798

LBP804