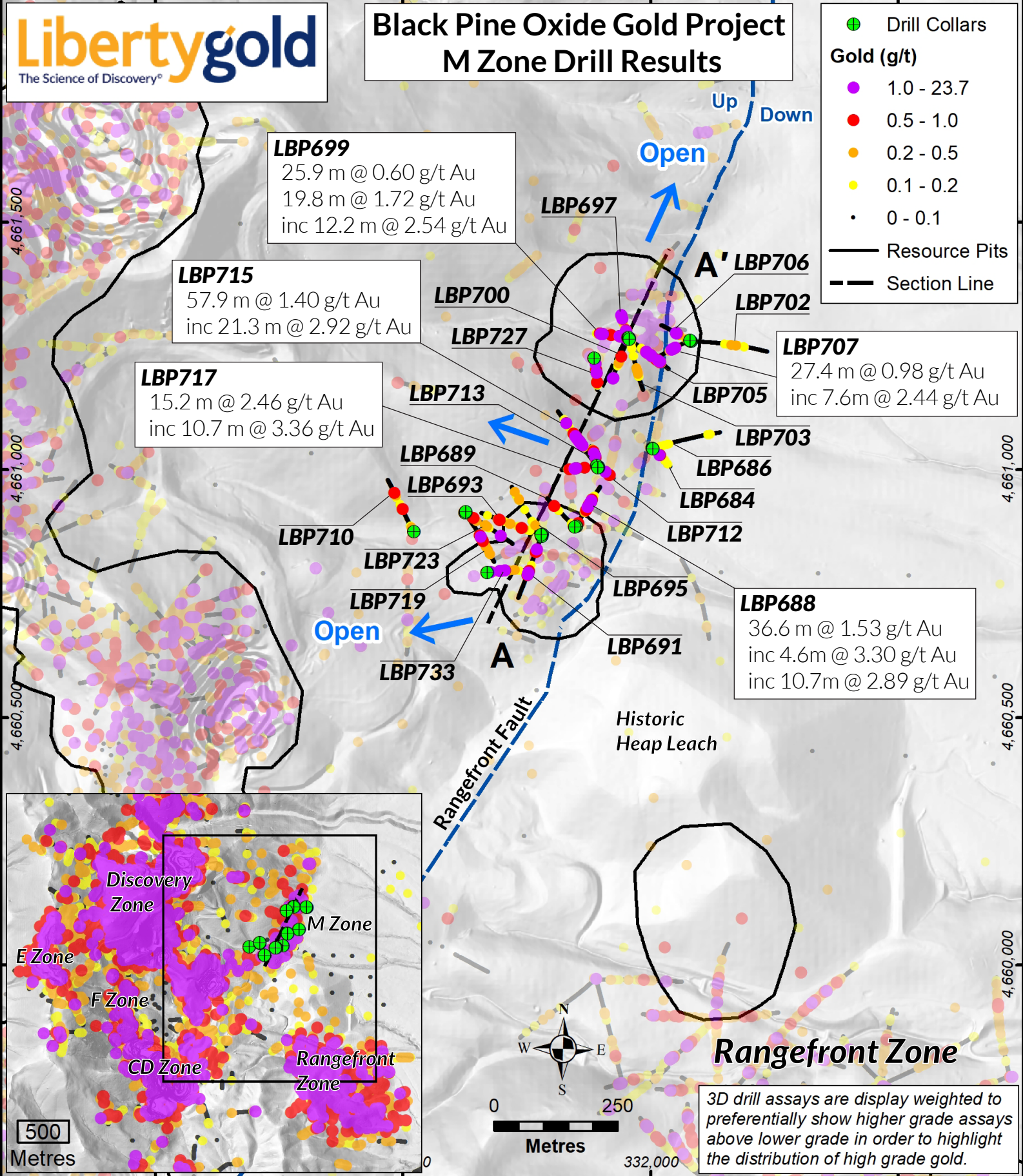


**Black Pine Oxide Gold Project
M Zone Drill Results**

- Drill Collars
- Gold (g/t)**
- 1.0 - 23.7
- 0.5 - 1.0
- 0.2 - 0.5
- 0.1 - 0.2
- 0 - 0.1
- Resource Pits
- - - Section Line



LBP699
25.9 m @ 0.60 g/t Au
19.8 m @ 1.72 g/t Au
inc 12.2 m @ 2.54 g/t Au

LBP715
57.9 m @ 1.40 g/t Au
inc 21.3 m @ 2.92 g/t Au

LBP717
15.2 m @ 2.46 g/t Au
inc 10.7 m @ 3.36 g/t Au

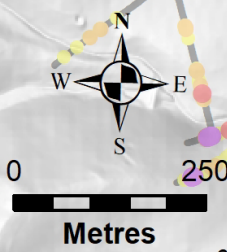
LBP707
27.4 m @ 0.98 g/t Au
inc 7.6m @ 2.44 g/t Au

LBP688
36.6 m @ 1.53 g/t Au
inc 4.6m @ 3.30 g/t Au
inc 10.7m @ 2.89 g/t Au

Rangefront Zone

3D drill assays are display weighted to preferentially show higher grade assays above lower grade in order to highlight the distribution of high grade gold.

500
Metres



Black Pine Oxide Gold Project M Zone Drill Results

Drill Trace Legend

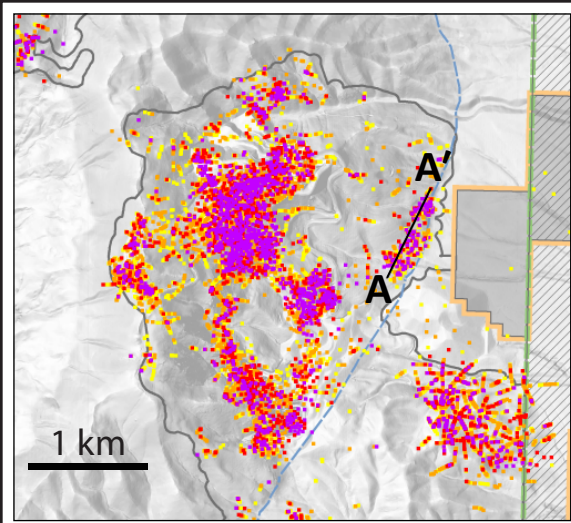
2021 Resource Pits

Drill Assay Au g/t

Black Pine Geology

- Carbonaceous Material
- Upper Plate**
 - Sandstone and Siltstones
- Middle Plate**
 - Siliclastic Carbonates
- Lower Plate**
 - Shale & Limestones

low angle thrust fault
 Detachment fault

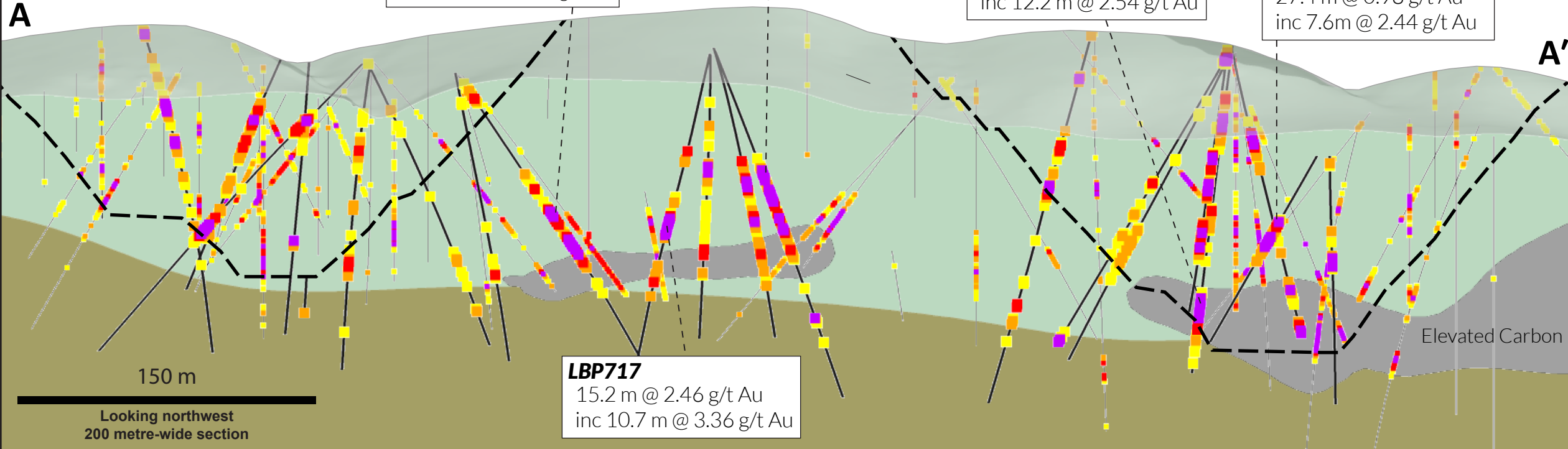


LBP688
 36.6 m @ 1.53 g/t Au
 inc 4.6m @ 3.30 g/t Au
 inc 10.7m @ 2.89 g/t Au

LBP715
 57.9 m @ 1.40 g/t Au
 inc 21.3 m @ 2.92 g/t Au

LBP699
 25.9 m @ 0.60 g/t Au
 19.8 m @ 1.72 g/t Au
 inc 12.2 m @ 2.54 g/t Au

LBP707
 27.4 m @ 0.98 g/t Au
 inc 7.6m @ 2.44 g/t Au



LBP717
 15.2 m @ 2.46 g/t Au
 inc 10.7 m @ 3.36 g/t Au