

LBP675
33.5 m @ 0.30 g/t Au

LBP750
80.8 m @ 0.60 g/t Au
inc 13.7 m @ 1.47 g/t Au

LBP744
47.2 m @ 0.47 g/t Au

LBP708
51.8 m @ 0.57 g/t Au

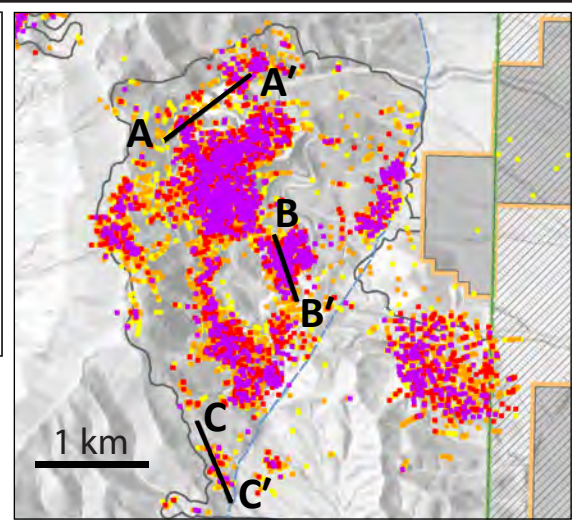
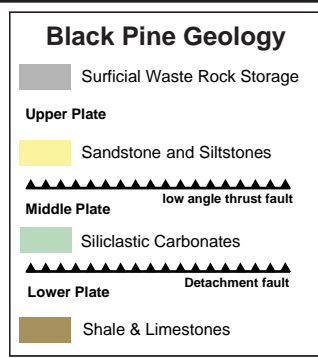
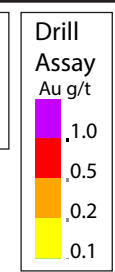
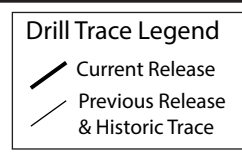
LBP761
19.8 m @ 0.64 g/t Au

- Drill Collars
- Cross Section Line
- USFS / BLM Boundary
- Project Claim Boundary
- USFS Plan of Operations
- BLM Permitted Road & Pad Area
- Removed From Staking

3D drill assays are displayed weighted to preferentially show higher grade assays above lower grade in order to highlight the distribution of high grade gold.

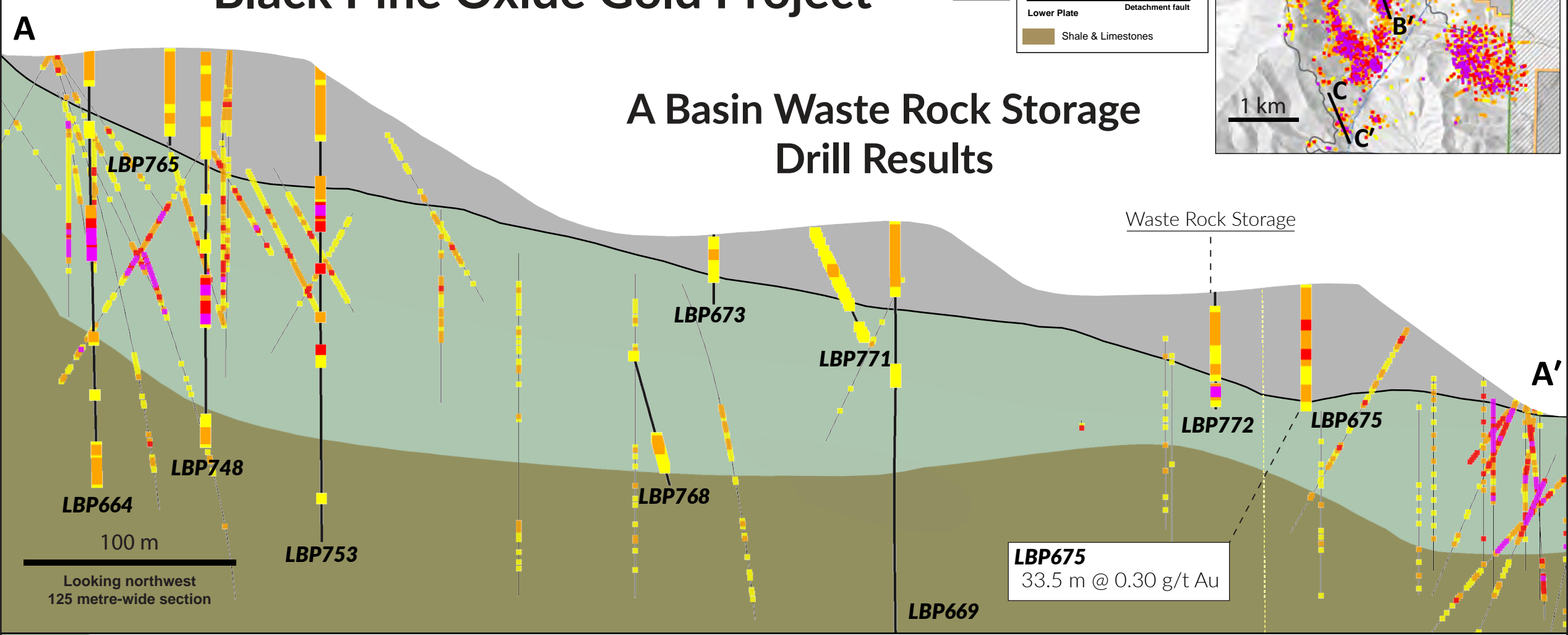
Black Pine Project, Idaho Drill Results

3D Drill Assays	
Gold (g/t)	
●	1.00 - 23.70
●	0.50 - 1.00
●	0.20 - 0.50
●	0.10 - 0.20
●	0.01 - 0.10

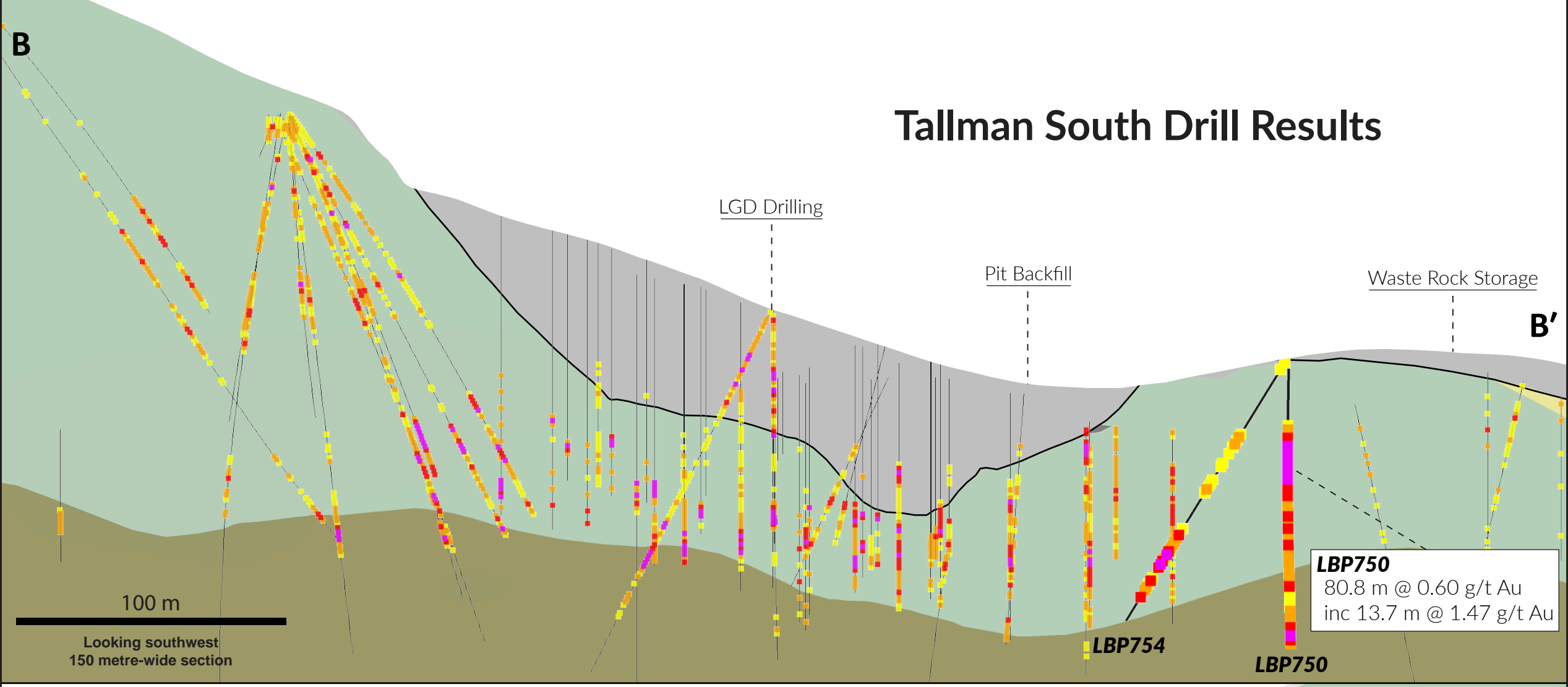


Black Pine Oxide Gold Project

A Basin Waste Rock Storage Drill Results



Tallman South Drill Results



Bobcat Zone Drill Results

