

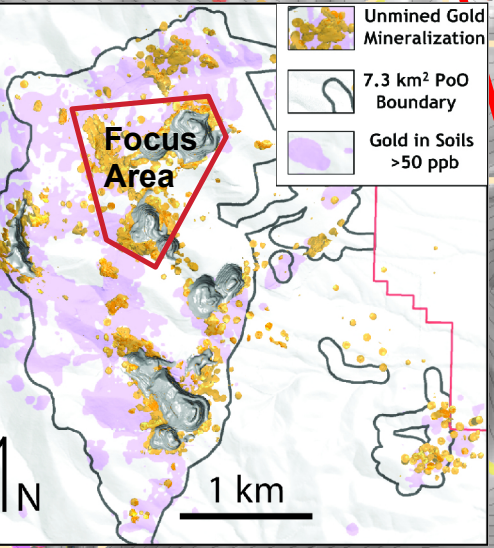
**LBP043:**  
 10.7 m @ 1.52 g/t Au  
 9.1 m @ 6.11 g/t Au  
 53.3 m @ 4.39 g/t Au

**LBP048:**  
 21.3 m @ 0.34 g/t Au  
 19.8 m @ 0.33 g/t Au  
 30.5 m @ 0.78 g/t Au  
 39.6 m @ 1.16 g/t Au

**LBP045:**  
 25.9 m @ 0.43 g/t Au  
 22.9 m @ 0.58 g/t Au  
 12.2 m @ 1.22 g/t Au

**LBP050:**  
 19.8 m @ 0.32 g/t Au  
 12.2 m @ 2.34 g/t Au

**LBP044:**  
 19.8 m @ 1.43 g/t Au  
 16.8 m @ 2.90 g/t Au



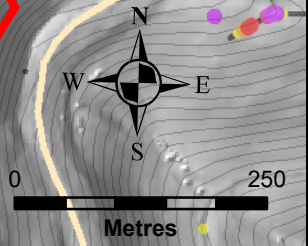
Unmined Gold Mineralization  
 7.3 km<sup>2</sup> PoO Boundary  
 Gold in Soils >50 ppb

**Black Pine Project  
 2019 Drill Results  
 Discovery 2 Zone**



*3D drill assays are displayed weighted to preferentially show higher grade assays above lower grade in order to highlight the distribution of high grade gold.*

- Drill Collars - Current Release
  - Drill Collars - Results Pending
- 3D Drill Assays (Au ppm)**
- 0 - 0.2
  - 0.2 - 0.4
  - 0.4 - 0.6
  - 0.6 - 1.0
  - 1.0 - 23.7
- Road & Pad Outlines



4,661,500

4,661,500

4,661,000

4,661,000

330,000

330,500

331,000

330,000

330,500

331,000